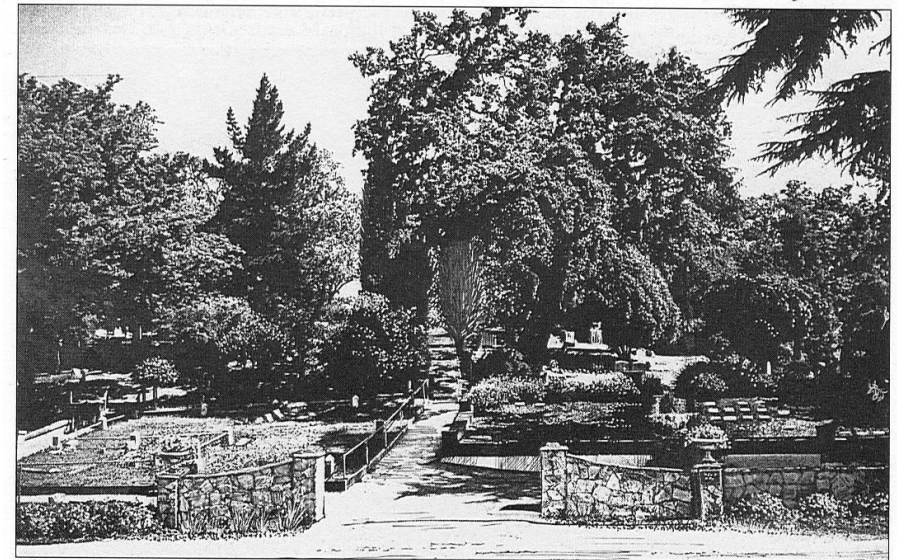


Alamo Cemetery

Dedicated 1980



The Alamo Cemetery began on a gentle hill east of San Ramon Creek during the 1850s. Cemetery plots include many San Ramon Valley pioneer families. The main path includes Podva, Stow, Stone, Noia, and Boone family members. A public nondenominational cemetery and special district, its park-like setting and many pioneer graves make the cemetery a favorite visitor destination. (Drawing by Paul Dunlap.)