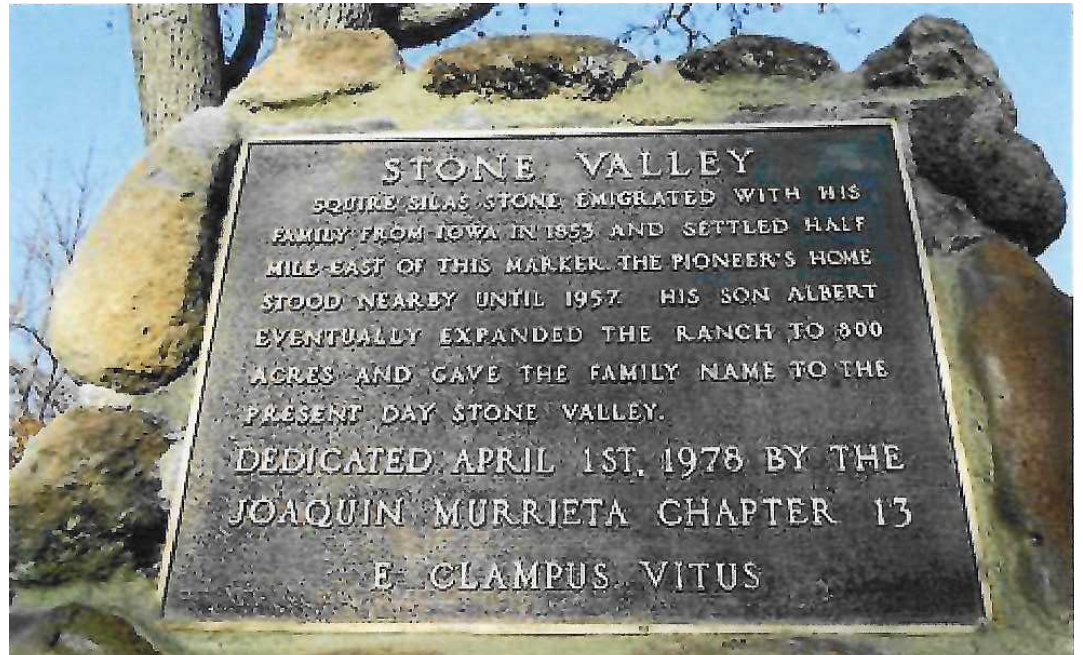


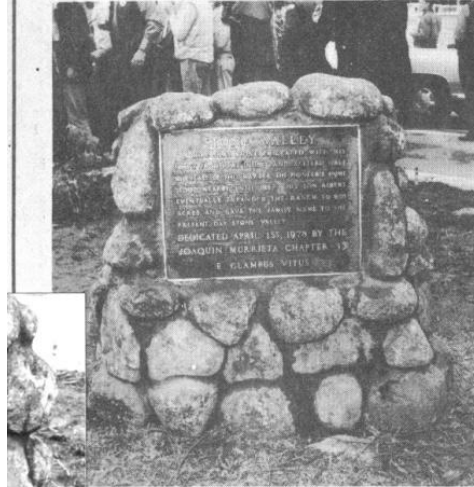
Silas Stone Marker

Dedicated 1978



Page 10 THE VALLEY PIONEER, Wednesday, April 5, 1978

Elwin Rix "Rocky" Stone



Clampers convene

Wearing black hats, black pants and red shirts, and adorned with many badges, members of the E. Clampus Vitus Joaquin Murrieta Chapter No. 13 dedicated a plaque Saturday to Silas Stone, the first settler to homestead the Alamo - Stone Valley area.

The plaque can be seen at the entrance to the shopping center on Stone Valley Road and Danville Boulevard.

At age 61 Silas Stone and his family and friends traveled from Iowa to California in 1853, and two years later he built an eight-room home in Alamo that stood for 102 years.

He acquired the title squire shortly after arriving in Alamo for his community activities. In 1855 Colonel Albert Ward Stone also brought his family to Alamo.

E Clampus Vitus is a California organization responsible for erecting historical monuments to people, places or events. They are committed to dedicating one or more plaques a year.

Joaquin Murrieta Chapter No. 13 covers the area of Alameda and Contra Costa counties, and they selected the Stone Valley pioneers as this year's project.